

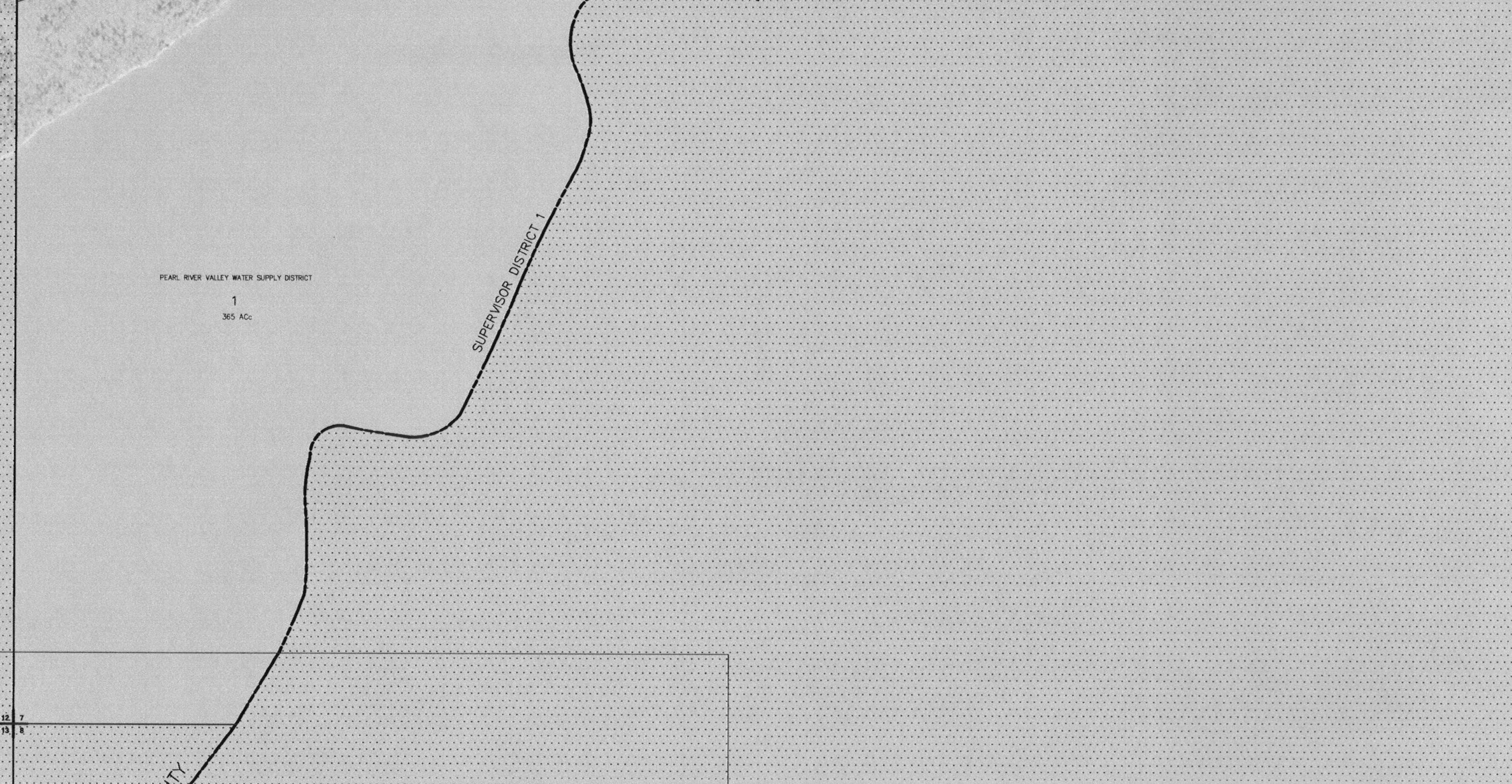
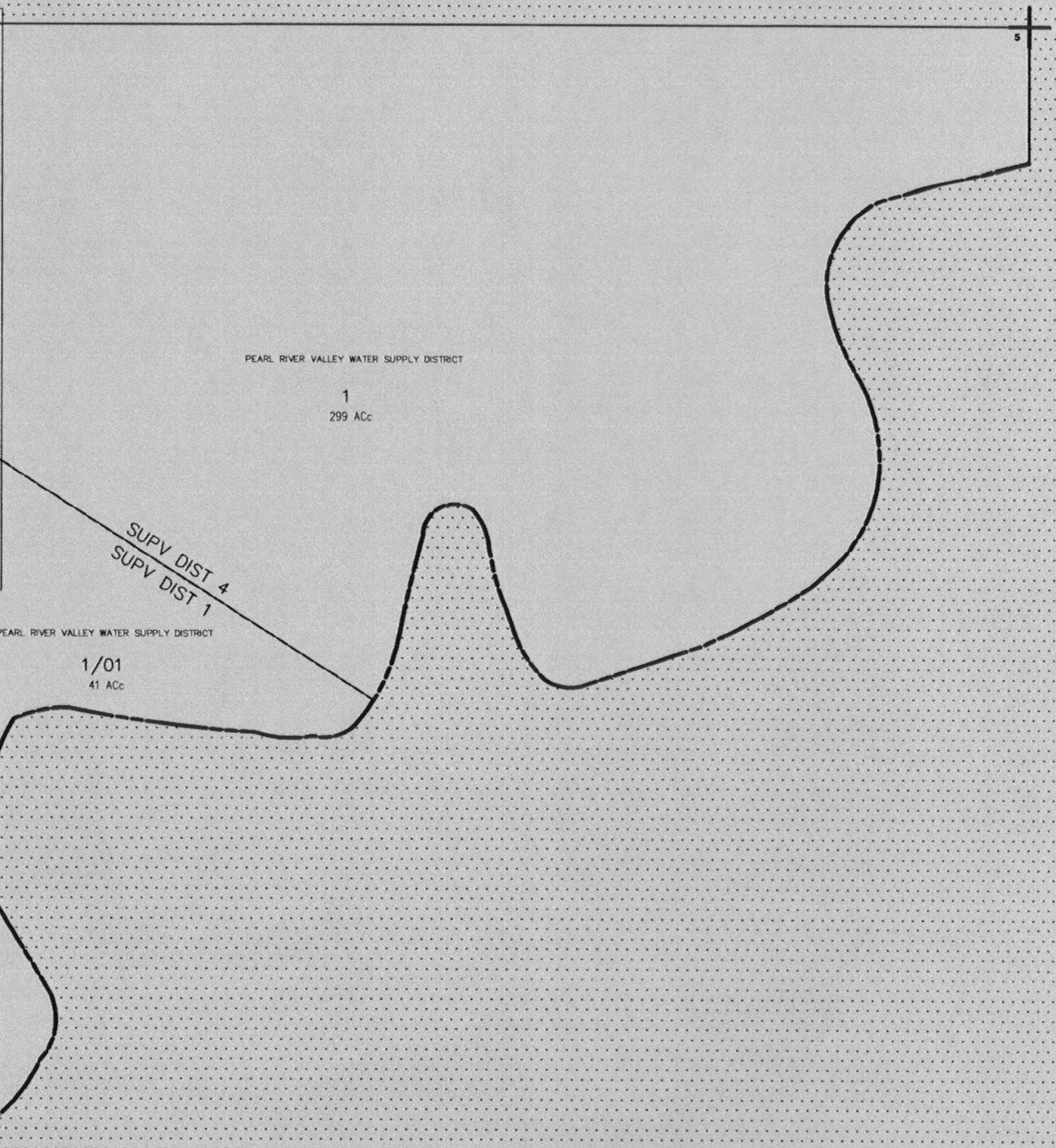
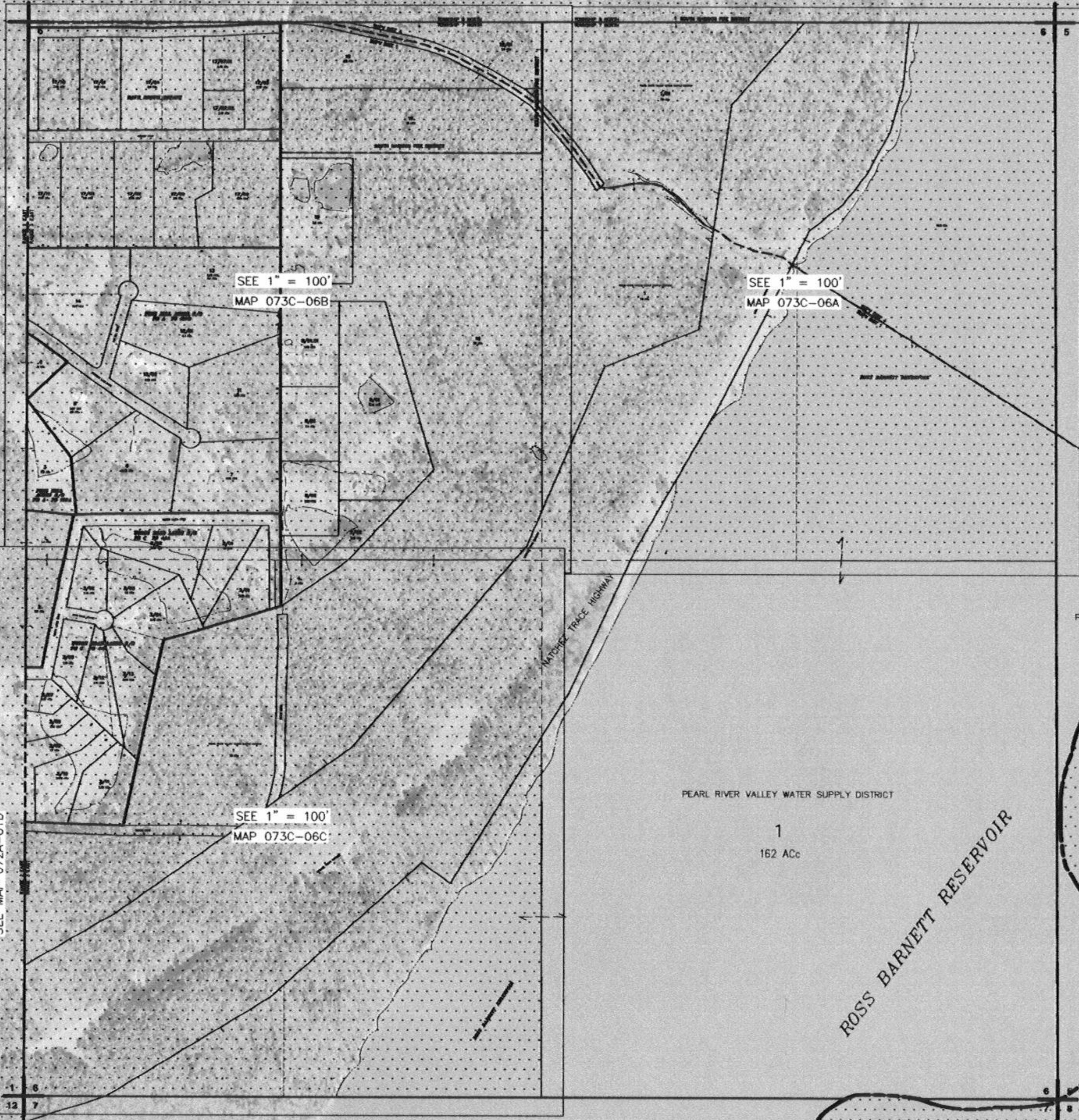
SEE MAP 0831

SEE MAP 072A-01A

SEE MAP 072A-01D

SEE MAP 072A-12A

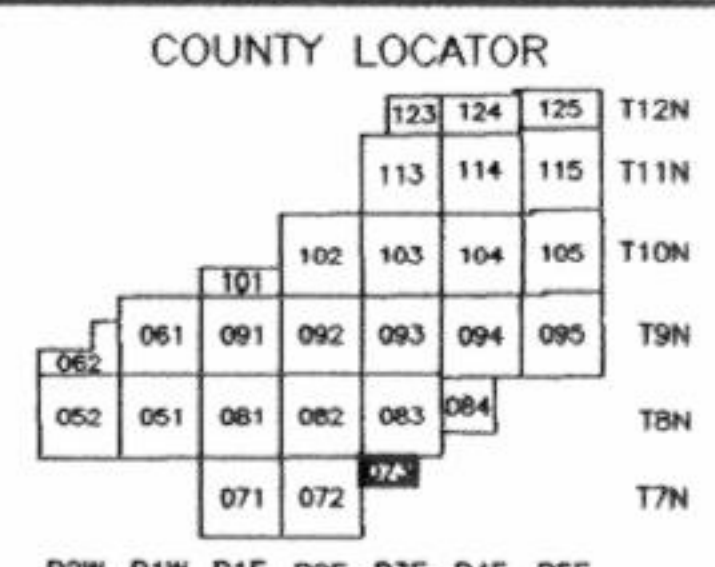
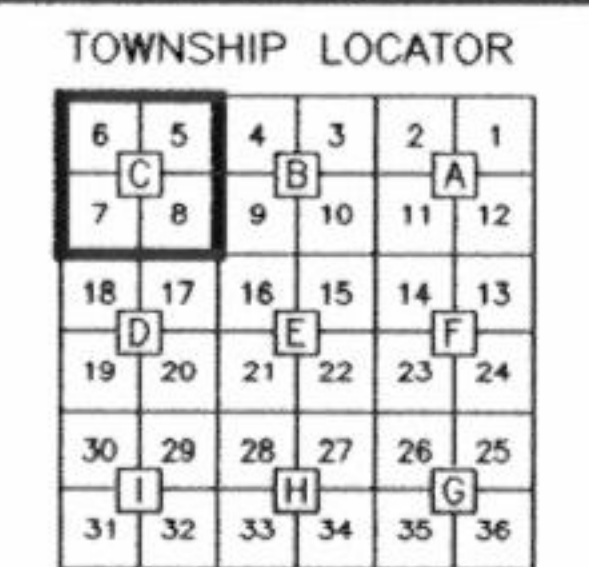
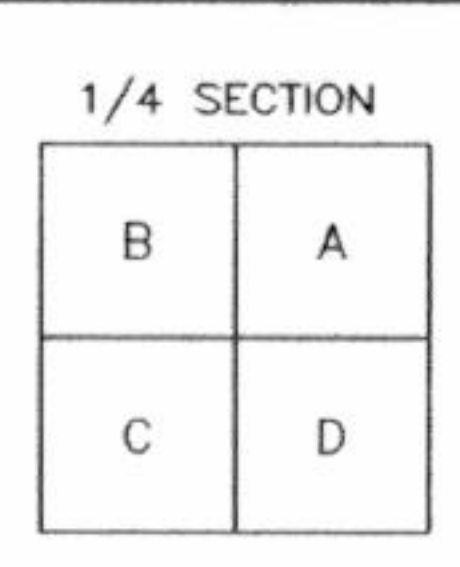
SEE MAP 072A-12D



THIS PROPERTY OWNERSHIP MAP IS FOR TAX PURPOSES ONLY.  
 IT IS NOT INTENDED FOR CONVEYANCES NOR IS IT A LEGAL SURVEY.  
 THIS MAP WAS PREPARED BY:

**TRI-STATE CONSULTING SERVICES, INC.**  
 P.O. BOX 1132 GULFPORT, MS 39204  
 P.O. BOX 160 CROPWELL, AL 35094  
 3 CENTRAL PLAZA PMB 246 ROME, GEORGIA 30162

LEGEND			
COUNTY LINE	-----	PARCEL NUMBER	24
CORPORATION LINE	-----	ACREAGE	2.4 AC
TOWNSHIP-RANGE LINE	-----	ACREAGE, CALCULATED	1.3 ACc
SECTION LINE	-----	SUBDIVISION LOT NUMBER	23
STATE LINE	-----	DIMENSION	160'
DISTRICT LINE	-----		



**MADISON COUNTY, MISSISSIPPI**  
**MAP 073C**

SECTION	5-6-7
TOWNSHIP	7N
RANGE	3E

SCALE: 1"=400'  
 DATE OF PHOTOGRAPHY: FEBRUARY, 2001