

1/02
4 ACc

SEE MAP 092A

SUPV. DIST. 5

10 11

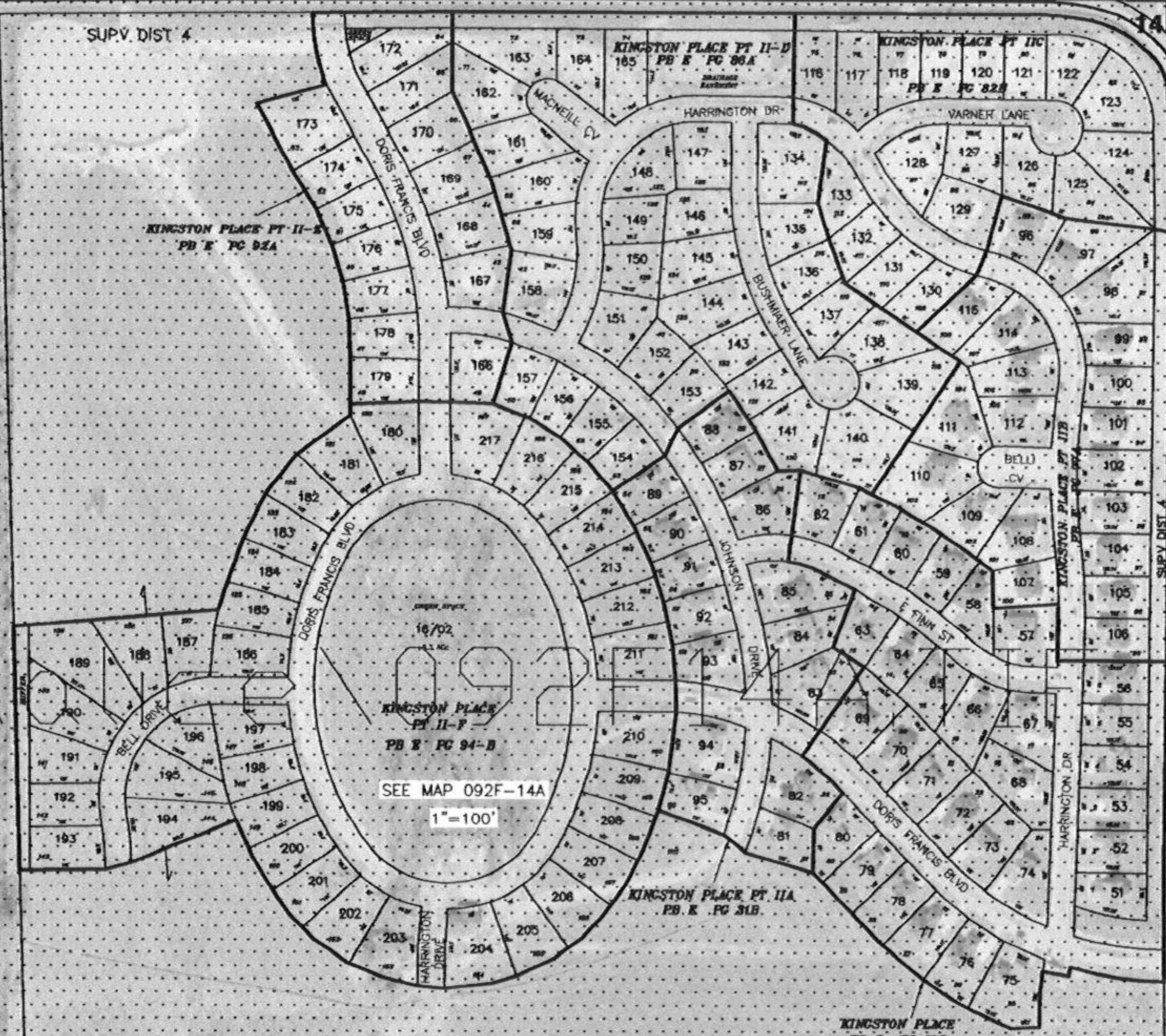
11 12

15 14

14 13

HEINDL ROAD

SUPV. DIST. 4



SEE MAP 092F-13B

SEE MAP 092E

CITY OF CANTON
1
288 ACc



SEE MAP 092F-14D
1"=100'

SEE MAP 092F-13C

15 14

14 13

22 23

23 24

SEE MAP 092F-23B

CANTON CITY LIMIT

CANTON CITY LIMIT

SEE MAP 092F-23A

THIS PROPERTY OWNERSHIP MAP IS FOR TAX PURPOSES ONLY. IT IS NOT INTENDED FOR CONVEYANCES NOR IS IT A LEGAL SURVEY. THIS MAP WAS PREPARED BY:

TRI-STATE CONSULTING SERVICES, INC.

P.O. BOX 1132 GULFPORT, MS 39204 P.O. BOX 160 CROWPELL, AL 35054 3 CENTRAL PLAZA PMB 246 ROME, GEORGIA 30162

LEGEND

- COUNTY LINE _____
- CORPORATION LINE _____
- TOWNSHIP-RANGE LINE _____
- SECTION LINE _____
- STATE LINE _____
- DISTRICT LINE _____

- PARCEL NUMBER 24
- ACREAGE 2.4 AC
- ACREAGE, CALCULATED 1.3 ACc
- SUBDIVISION LOT NUMBER 23
- DIMENSION 160'

1/4 SECTION

B	A
C	D

TOWNSHIP LOCATOR

6	5	4	3	2	1
7	8	9	10	11	12
18	17	16	15	14	13
19	20	21	22	23	24
30	29	28	27	26	25
31	32	33	34	35	36

COUNTY LOCATOR

123	124	125
113	114	115
103	104	105
093	094	095
083	084	085
073	072	071



SCALE: 1"=200'

MADISON COUNTY, MISSISSIPPI
MAP 092F-14

SECTION	14
TOWNSHIP	9N
RANGE	2E

DATE OF PHOTOGRAPHY: FEBRUARY, 2001